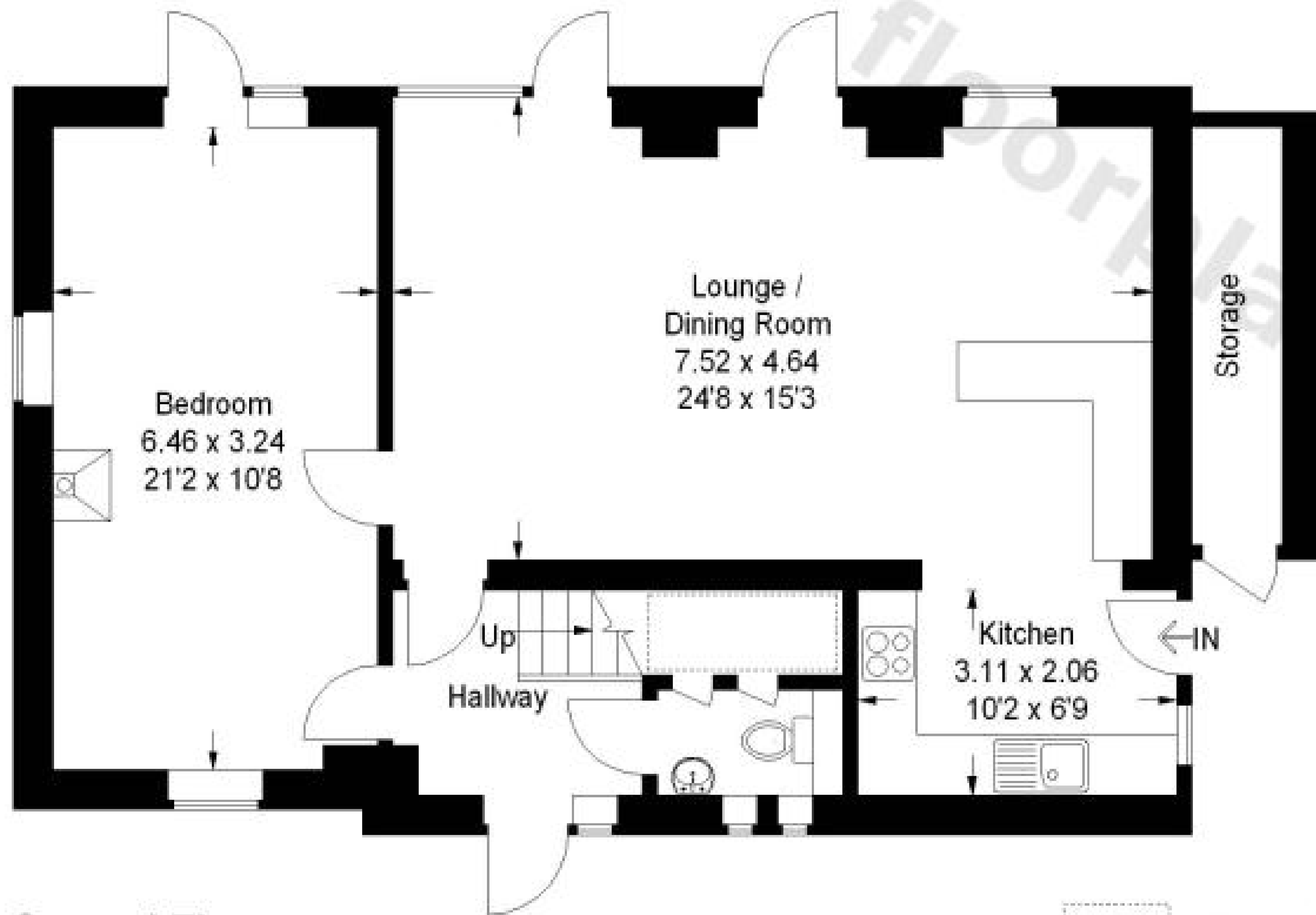


Great Higham Oast, Doddington, ME9 0AP

Approximate Gross Internal Area (Excluding Void Space)
133 sq m / 1432 sq ft
Storage = 4 sq m / 43 sq ft
Total = 137 sq m / 1475 sq ft



Ground Floor



First Floor

 = Reduced headroom below 1.5 m / 5'0

Illustration for identification purposes only, measurements are approximate, not to scale.
FloorplansUsketch.com © 2013 (ID 85543)